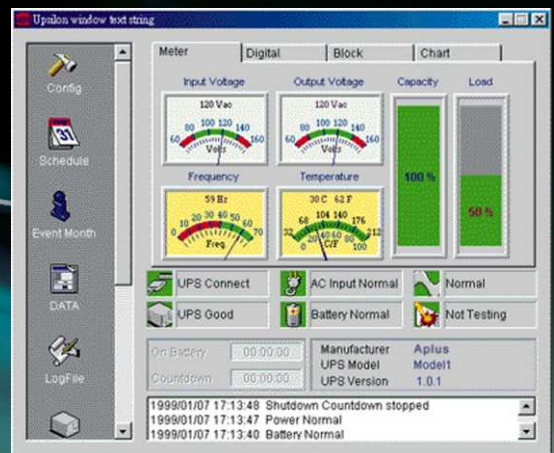


# Smart On-Line UPS

PLUS-III 1KVA ~ 3KVA

## ► Features:

- Microprocessor control guarantees high reliability.
- Extended back up time with external battery bank.
- Unity input power factor and wide input range.
- True sine-wave double conversion on-line UPS.
- DC start and automatic self-diagnostic function.
- RS-232 communication port and built-in SNMP slot.
- High efficiency design to save electricity.
- Low heat dissipation in long time operation.
- Designed to operate under harsh environment.
- Enhanced protections against lighting surges, disturbances, etc.



# PLUS-III 1KVA ~3KVA

## ► SPECIFICATION:

MODEL		Plus III-1K	Plus III-3K	
Capacity	VA/ Watts	1KVA/ 700W	3KVA/ 2100W	
Input	Voltage Range	110V system 80V~143V (100% load), 65V~80V (70% load)		
		220V system 160V~286V (100% load), 130V~160V (70% load)		
	Frequency	50Hz / 60Hz (auto sensing)		
	Power Factor	>0.95	>0.97	
Output	Voltage	110V system 100V, 110V, 115V, 120V		
		220V system 200V, 220V, 230V, 240V		
	Voltage Regulation	+/-2%		
	Frequency	Synchronized (Line mode), 50Hz or 60Hz +/- 0.5% (Battery mode)		
	Wave-form	True Sinewave		
	Distortion	< 3% (Full linear load)	< 4% (Full linear load)	
	Capacity	108% - 150% for 1 min., >150% for 200ms		
	Crest Ratio	3 : 1		
	Battery	Type	Maintenance free sealed lead-acid battery	
		Capacity	12V / 7Ah * 3pcs	12V / 21W * 8pcs
Back-up (Full / Half load)		7min / 18min	5min / 13min	
Recharger Time		8 hrs to 90%	5 hrs to 90%	
Bypass	Automatic	Overload and UPS failure		
	Transfer Time	0 ms (2.5ms inverter to bypass)		
Display	LED	Normal (Green), Bypass (Yellow), Battery Low (Yellow), Inverter (Green), Load% (5 LED), Battery% (5 LED), Fault (Red)		
Audible Alarm	Battery Mode	Beeping every 4 seconds (re-settable) and per second when battery low		
	Overload	Beeping twice per second		
	Fault	Beeping Continuously		
Output	Socket	NEMA5-15R*4pcs or IEC320*3pcs	NEMA5-15R *4psc or IEC320*6pcs + Terminal Block	
Communications	RS-232 Interface	UPSilon 2000 monitoring software		
	SNMP Intelligent Slot	For NetAgent II (Option) with SNMP manager and Web browser		
Network	Surge Protection	Rj45 I/O port available for 10base-T network of Fax / Modem		
Environment	Temperature	0-40 degree C; 32-104 degree F		
	Humidity	0-95% non-condensing		
	Acoustic Noise	Less than 45dBA (at 1 meter)	Less than 50dBA (at 1 meter)	
Physical	Net Weight	15kgs (w. Battery)	35kgs (w. Battery)	
	Dimension (W*H*D)	160*232*405 mm	160*365*470 mm	



### APLUS POWER CORP.

No. 36-3 Nanan Road, Tzu-Tong, Yunlin Hsien, Taiwan, R.O.C.

#### Sale Office

Tel: 886-2-28341269

Fax: 886-2-28341449

<http://www.aplusups.com.tw>

E-mail: [sales@aplusups.com.tw](mailto:sales@aplusups.com.tw)